

DIGICUBE HD STC **NEW**

The only **HD TOUCHSCREEN** analyzer with **T2**

MAIN FEATURES

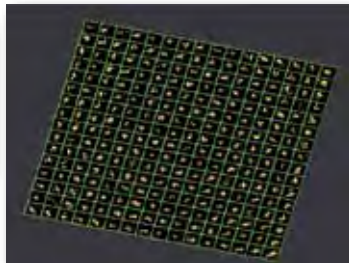
- CATV TUNER with extended band 4-1000 MHz
- SAT TUNER with extended band 930-2250 MHz
- Extended GSM band 860-1000 MHz for telephone repeater installations, see page 24
- Exclusive patented ROVER **AUTODISCOVERY** system: automatically recognises and selects analog TV and digital TV COFDM/QAM signals in both measurement and spectrum mode
- **Detects, measures and SHOWS pictures of MPEG4 HD High Definition programs**
- All worldwide SAT transponder pre-stored
- Automatic quality analysis: FAIL-MARG-PASS
- New TFT, ultrabright, touch screen, 7", 16:9, high resolution
- TOUCH, capacitive encoder (cap-touch)
- **All measurements, program list, A/V PID, settings and pictures on one screen**
- Auto memory, manual memory & Data Logger functions
- **Conditional access, Common Interface**
- Weighs only 2.5 kg, dim: H 11.5 x L 24.5 x D 18 cm
- **LITHIUM batteries, 4 to 6 hour battery autonomy**
- Battery test function to regenerate/measure battery levels and calibrate the indicator
- Supplied with soft bag for transport, mains adapter and vehicle adapter
- Free SW upgradeable on-line (USB-2 socket OTG)
- HDMI output



- **DVB-T2 & S2 included**
- **FULL MPEG2 & 4 HD & SD**
- **10A LITHIUM BATTERIES**
- **CONDITIONAL ACCESS**
- **ICON NAVIGATION**
- **FAST SPECTRUM with MEMORY**



DVB-T2 normal constellation with 256 QAM modulation



DVB-T2 rotated constellation 256 QAM



ECHO MEASUREMENT in SFN networks, with impulse response in real time



MICRO ECHO measurement in SFN networks, with impulse response in real time



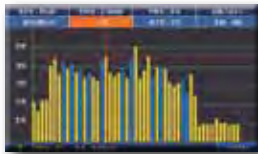
All measurements, pictures and settings on one screen



Fast and super-fast spectrum with memory peak. Detects and memorizes all the details for you



Constell. DVB-S2 = 8PSK, T & T2 = COFDM, C = QAM and all the modulation parameters



Bars Scan TV = analog = digital See page 23



Impulse response in real time (ECHO & MICRO ECHO measurement in "SFN" networks) See page 22



All measurements, pictures and settings on one screen

For technical specifications and product cross-reference, see pages 25 and 26.

Mod. DIGICUBE HD STC DUB-S & S2 / DUB-T/T2 & H / DUB-C & DOCSIS D.S.

PROFESSIONAL COMBINED ANALYZER, 4-2.250 MHz, for SAT QPSK/8PSK - TV COFDM and CATV QAM signals

- Pre-memorized SAT transponder navigation in all worldwide satellites and in all the worldwide standard TV channel plans
- Assisted satellite dish pointing, double input (DUAL LNB) and Sat Finder functions
- All DiSEqC commands and SCR with automatic search, USALS motor protocol
- Constellation visualization, MER, PER, LDPC, BCH, aBER, bBER, EVM, ECHOES, Noise Margin & Level/Power meas., Spectrum Analysis
- CABLE MEAS: DOCSIS downstream, INGRESS mode, LEAKAGE mode, BARS SCAN and TILT
- Options: with ATSC 8VSB for USA or GB20600-2006 Single and multicarrier for CHINA
- **Factory HW upgrades: DVB-C2 (until 31.12.2011)**

