

# FAST Series

**NEW**

**Revolutionary palm-tops, complete and easy to use**

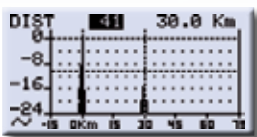


**ROVER INSTRUMENTS**  
A STEP AHEAD IN DIGITAL TV

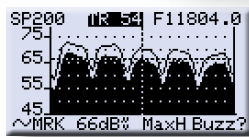


## MAIN FEATURES

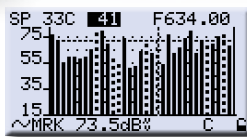
- CATV TUNER with extended band 4-1000 MHz
- SAT TUNER with extended band 930-2250 MHz
- Extended GSM band 860-1000 MHz for telephone repeater installations, see page 24
- Exclusive patented ROVER **AUTODISCOVERY** system automatically recognises and selects analog TV and digital COFDM TV signals in both measurement and spectrum mode
- **Detects and measures all MPEG 4HD signals and High Definition programs**
- Automatic quality analysis: FAIL-MARGINAL-PASS
- Rotational encoder and numerical keyboard
- New ultra-bright graphics display
- Automatic and manual memory and Data Logger
- Weighs only 1 kg
- Up to 4 hour battery autonomy
- Battery test function to regenerate/measure battery levels and calibrate the indicator
- Supplied with soft bage for transport, mains adapter and 12 V vehicle adapter
- Free SW upgradeable on-line (USB-2 socket)



Impulse response (ECHO in "SFN" networks see page 22)



Fast TV & SAT spectrum with peak memory **detects and memorizes all the details for you**



TV Bars Scan & TILT  
| = analog    : = digital  
See page 23



DVB-S2 = 8PSK, T = COFDM, Constellation and modulation parameters



DVB-C = QAM Constellation and modulation parameters

### Mod. **FAST-STC** (EU Vers. DVB-S&S2/DVB-T/DVB-C) (USA Vers. DVB-S&S2/ATSC/J83 QAM ANNEX A&B)

**ULTRA-PORTABLE, SUPER-COMBINED PALM-TOP ANALYZER, 4-2150 MHz, FOR DIGITAL QPSK/8PSK SAT, COFDM/8VSB TV, QAM CATV SIGNALS**

- Pre-memorized Transponder navigation in all worldwide satellites and in all the worldwide standard TV channel plans
- Assisted satellite dish pointing, double input (DUAL LNB) dish pointing and Sat Finder functions
- All DiSEqC commands and SCR Ready with automatic search and USALS motor protocol
- Constellation, MER, PER, LDPC, BCH, aBER, bBER, EVM, Noise Margin, Level/Power measurements and Spectrum Analyzer
- CABLE MEAS: DOCSIS downstream, INGRESS mode, LEAKAGE mode, BARS SCAN and TILT

### Mod. **FAST-CABLE** (DVB-C Annex A&B) "ONE BUTTON PERFECT TEST"

**ULTRA-PORTABLE PALM-TOP ANALYZER, 4-1000 MHz, FOR CATV QAM & 8VSB TV SIGNALS**

- Constellation visualization, MER, aBER, bBER, ECHOES, Noise Margin, Level/Power measurements and spectrum analysis
- CATV MEASUREMENT: INGRESS mode, LEAKAGE mode, BARS SCAN and TILT

### Mod. **FAST-S2** DVB-S & DVB-S2 "ONE BUTTON PERFECT POINTING"

**ULTRA-PORTABLE PALM-TOP ANALYZER, 930-2.150 MHz, FOR QPSK/8PSK SAT SIGNALS**

- Assisted satellite dish pointing and Sat Finder functions for high quality pointing with intuitive interface
- Constellation visualization, MER, PER, LDPC, BCH, aBER, bBER, EVM, Noise Margin, Level/Power measurements and Spectrum Analyzer
- USB-2, Internet upgradable and PC configurable, USALS protocol motor

### Mod. **FAST-SO** DVB-S & S2/ OPTICAL "THE SPECIALIST OPTIC/COAX SOLUTION"

**ULTRA-PORTABLE PALM-TOP ANALYZER, 930-2.150 MHz, FOR SAT COAX & OPTICAL QPSK/8PSK**

- Assisted satellite dish pointing and Sat Finder functions for high quality pointing with intuitive interface
- Constellation visualization, MER, PER, LDPC, BCH, aBER, bBER, EVM, Noise Margin, Level/Power measurements and Spectrum Analyzer
- Optical power measurement from -20 dBm to +10 dBm, optic attenuation measurement, selectable optic bandwidth 1310nm, 1550nm
- **Spectrum visualization of the optic signals received, for example for optic SAT LNB pointing**

### Mod. **FAST-TC** (USA Vers. ATSC/J83 QAM ANNEX A&B) "ONE BUTTON PERFECT TEST"

**ULTRA-PORTABLE, COMBINED PALM-TOP ANALYZER, 4-1.000 MHz, FOR DIGITAL COFDM/8VSB TV, QAM CATV & ANALOG SIGNALS**

- Constellation, MER, aBER, bBER, EVM, Noise Margin, Level/Power measurements and Spect Analyzer
- CATV MEASUREMENT: INGRESS mode, LEAKAGE mode, BARS SCAN and TILT

### Mod. **FAST-T** DVB-T "ONE BUTTON PERFECT TEST"

**ULTRA-PORTABLE PALM-TOP ANALYZER, 47-1.000 MHz, FOR COFDM DIGITAL TV SIGNALS**

- Constellation visualization, MER, aBER, bBER, ECHO, Noise Margin, Level/Power measurements and Spect Analyzer