

teletronik®

Connectors



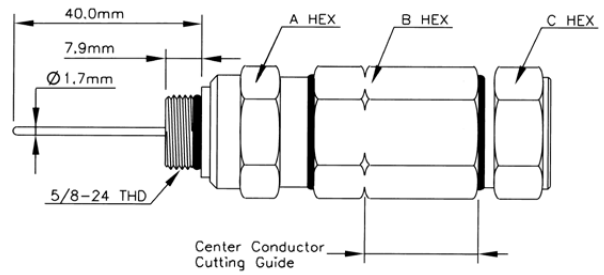
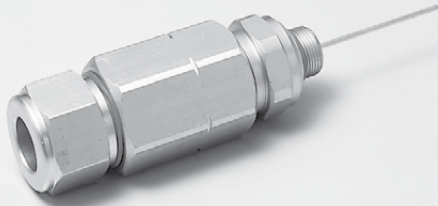
teletronik® AG 

Vorstadt 32
CH, 6304 Zug
Switzerland

teletronik@teletronik.com
www.teletronik.com

CH-QR

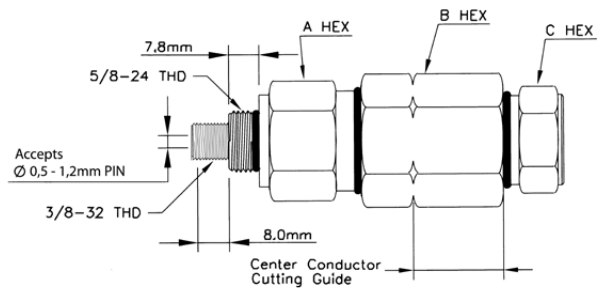
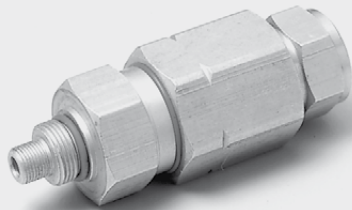
pin type connector for 540 and 715 QR type cables



Part number	Center cond. diameter (mm)	Cable outer diameter (mm)	DIMENSION (mm)		
			A	B	C
540-CH-QR	3,15	15,5	29	32	29
715-CH-QR	4,2	20	35	34	34

540-FF-QR

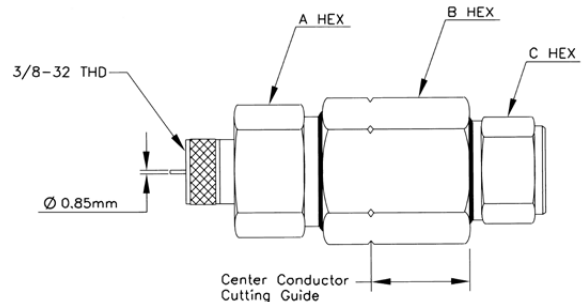
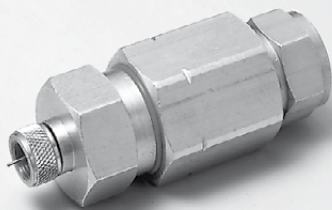
female "F" connector for 540 QR type cables



Part number	Center cond. diameter (mm)	Cable outer diameter (mm)	DIMENSION (mm)		
			A	B	C
540-FF-QR	3,15	15,5	29	32	29

540-FM-QR

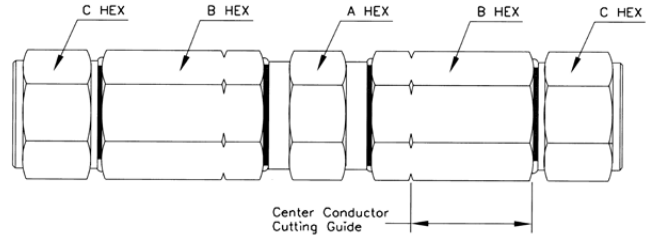
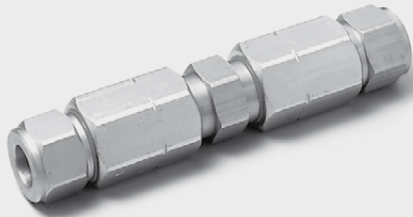
male "F" connector for 540 QR type cables



Part number	Center cond. diameter (mm)	Cable outer diameter (mm)	DIMENSION (mm)		
			A	B	C
540-FM-QR	3,15	15,5	29	32	29

SP-QR

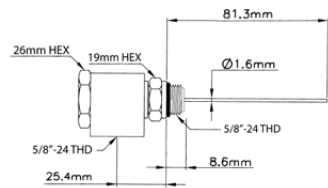
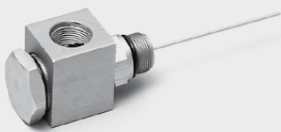
splice connector for 540 and 715 QR type cables



Part number	Center cond. diameter (mm)	Cable outer diameter (mm)	DIMENSION (mm)		
			A	B	C
540-SP-QR	3,15	15,5	29	32	29
715-SP-QR	4,2	20	35	34	34

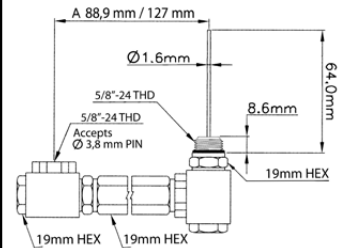
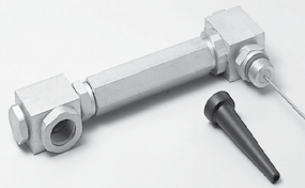
90-KS

90° "KS" adapter



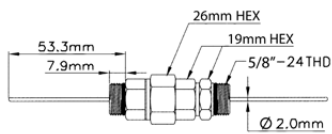
180-KS (F52 / F53)

180° "KS" adapter



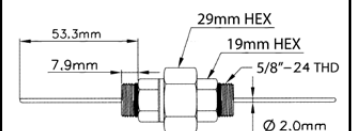
KS-KS-A

male splice adapter



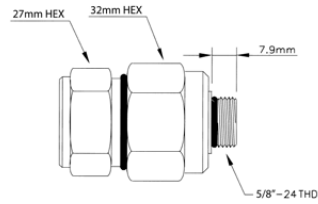
KS-KS-L

male splice adapter



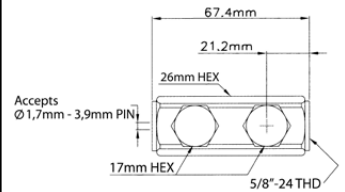
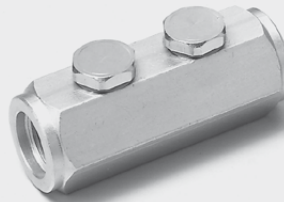
540-B-QR

feed through connector for 540 QR type cables



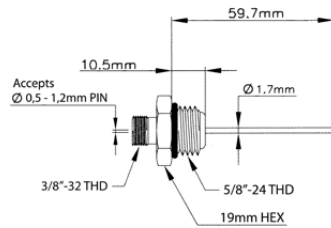
F28FT

female splice connector



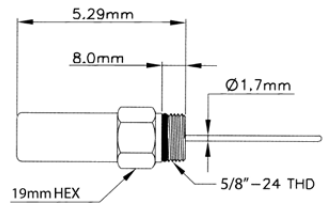
KS-F-AL

"KS" male to "F" female adapter



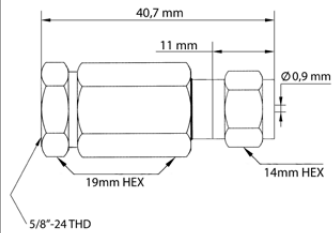
KS-TRM

75 ohm port terminator



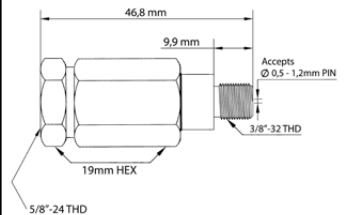
5/8 - FM

5/8 - "F" male adapter



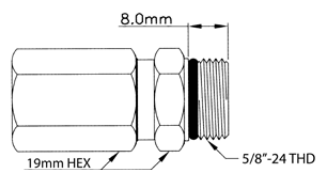
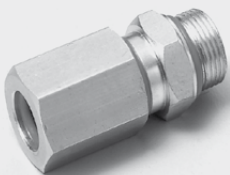
5/8 - FF

5/8 - "F" female adapter



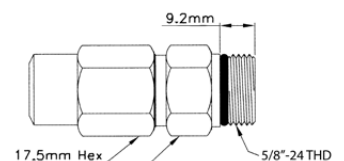
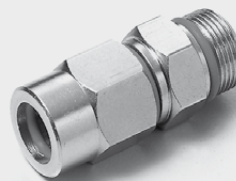
RG11-T-32

RG11 feed through 5/8" connector - ALU



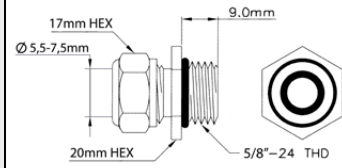
RG11-T-34

RG11 feed through 5/8" connector - BRASS



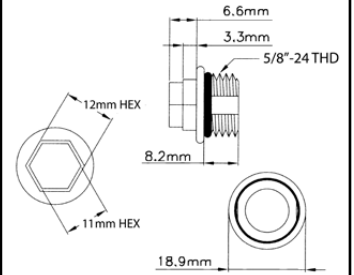
F23

binding connector (5/8"-24 THD)



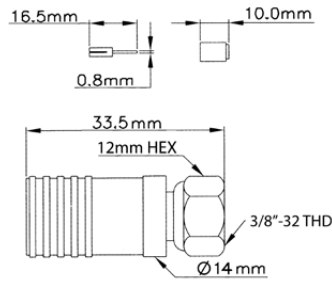
TD85

5/8" Terminator



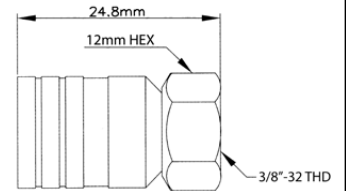
RG11-F15LS

RG11 "F" connector with pin



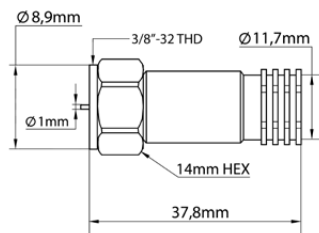
RG11-C-39

RG11 feed through "F" connector



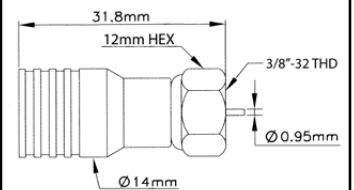
RG11-F-WR

water resist RG11 crimp "F" connector



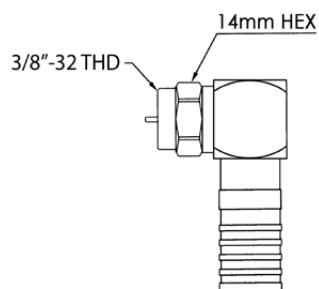
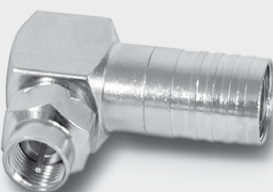
RG11-F15-1

RG11 "F" connector



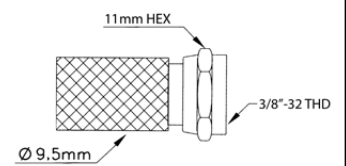
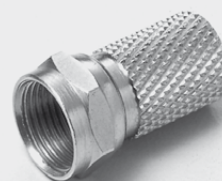
90-RG11-F15-1

RG11 90° crimp "F" connector



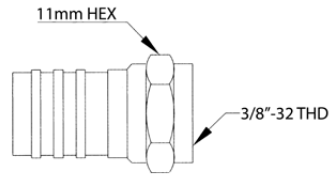
RG6-TWIST

RG6 twist on "F" connector



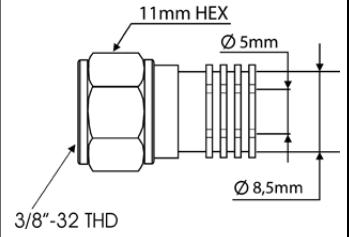
RG6-324

RG6 crimp "F" connector



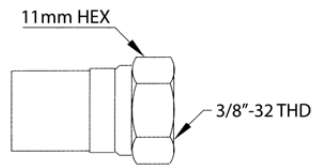
RG6-360-WR

RG6 crimp "F" connector (water resistant)



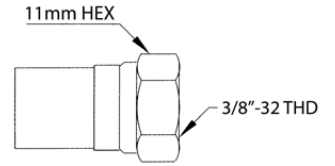
RG59-F-17-T

RG59 radial taper crimp "F" connector



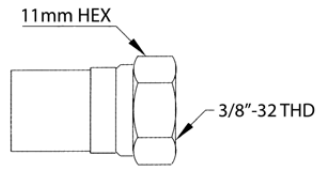
RG6-F-17-T

RG6 radial taper crimp "F" connector



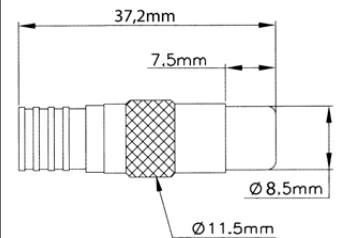
RG6-RTC-WR

RG6 radial taper crimp "F" connector (water resistant)



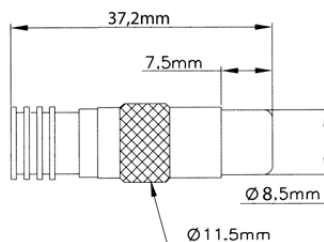
IEC-324M

RG6 IEC male crimp connector



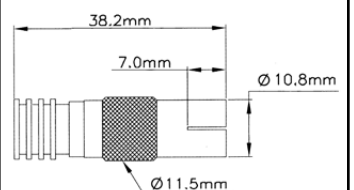
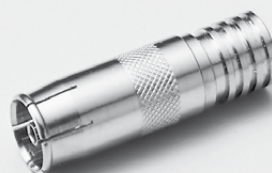
IEC-360M

RG6 IEC male crimp connector



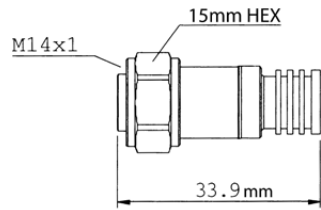
IEC-360F

RG6 IEC female crimp connector



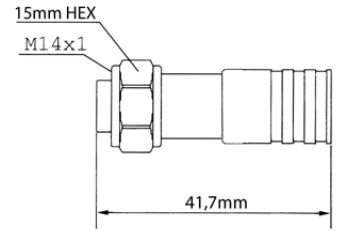
RG6-IEC

RG6 crimp IEC connector



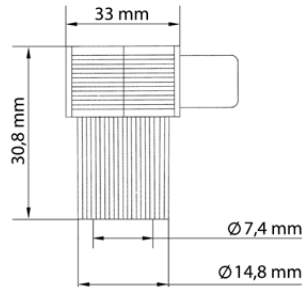
RG11-IEC

RG11 crimp IEC connector



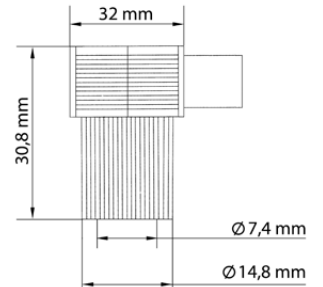
1161

modular 90° IEC male connector



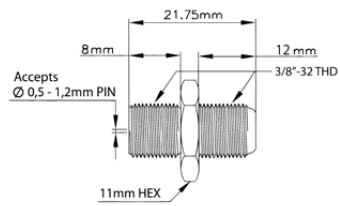
1162

modular 90° IEC female connector



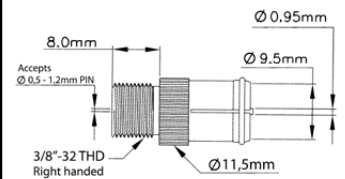
F1174

"F" female to female adapter



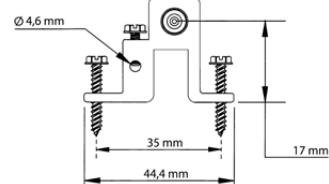
F1176

quick "F" connector



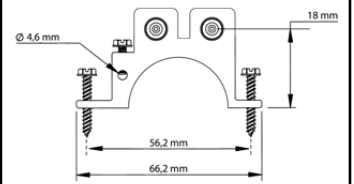
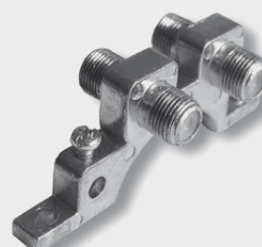
F1177

grounding block



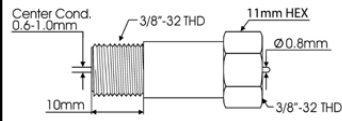
F1178

dual grounding block



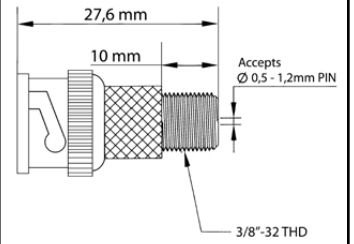
F8032

"F" male to female attenuator (1-15 dB)



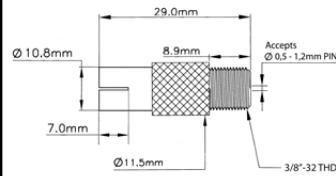
F8082

BNC-"F" adapter



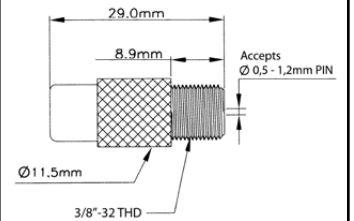
F8093F

"F" female - IEC female adapter



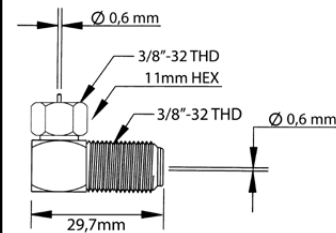
F8094M

"F" female - IEC male adapter



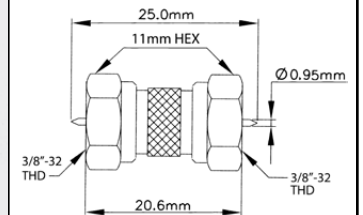
F8095

90° "F" female - "F" male adapter



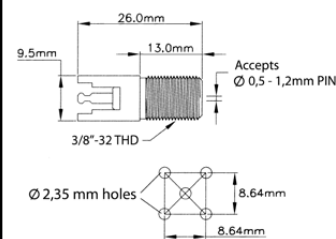
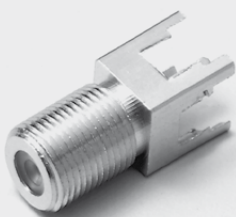
F8096

"F" male to male adapter



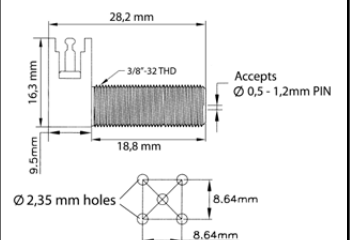
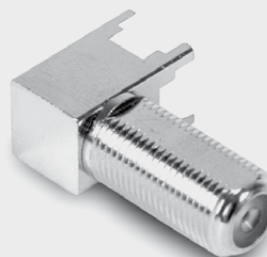
R32L

vertical PCB mount "F" female connector



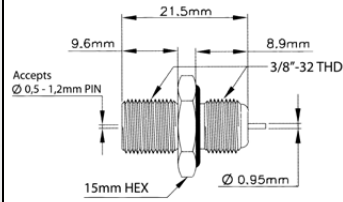
R86

horizontal PCB mount "F" female connector



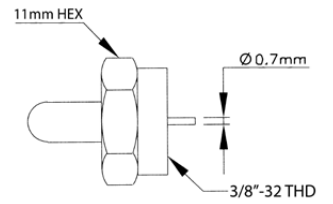
15092

water proof panel mount "F" female connector



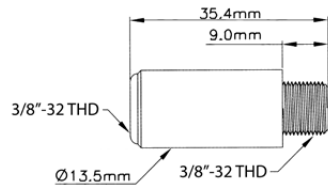
F33 / F33+O

"F" 75 ohm terminator



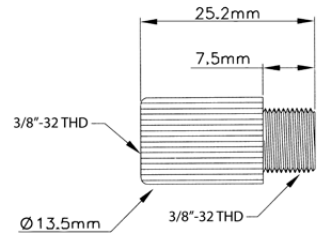
Y22-BB

theft proof 75 ohm terminator



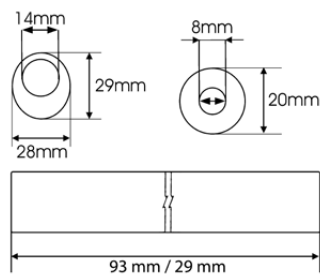
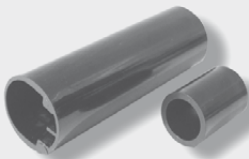
Y22-BS

theft proof 75 ohm terminator



AS-4" / AS-6"

security shield



F330-T

security shield with thread

